

[View PDF](#)

Overglaze

Printing on Porcelain 1800-1900, printed and painted

[Add to My Gallery](#) | [Create an Album](#)



**Additional Image:**



[enlarge](#) [+]

Example of a similar Minton dessert plate on glaze printed in blue, fired in glaze.

Shape Type

Dinner & Dessert Wares

Pattern Type

Plants

Date

1824-1828

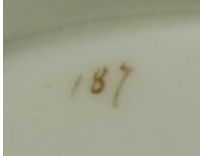
Dimensions

- Diameter: 9.75 in (24.77 cm)

Maker

Minton

**Maker's Mark:**



Painted

[enlarge](#) [+]

**Description:**

A single shell handled porcelain dessert plate in pattern number 187. The plate has a molded gadroon gilded rim with an inner gilded dontil band. Bat printed in charcoal grey overglaze and then over painted in green enamel with central flower print and four smaller flower prints around the rim. Marked on the base with 187 handpainted in gold. See the same design in other colours

[expand](#) [+]

[BACK TO CATALOG INDEX](#)



Printing on Porcelain 1800-1900

[View All](#)



Plants

[View All](#)



Examples by Maker

[View All](#)



Printed & Painted

[View All](#)



Print Type Indexd

[View All](#)