

[View PDF](#)

Overglaze

Printing on Porcelain 1800-1900, printed and painted

[Add to My Gallery](#) | [Create an Album](#)



Pattern



[enlarge](#) [+]

Source



[enlarge](#) [\[+\]](#)

Source Description:

Plate opposite page 198 in Volume 1 of *The Beauties of England and Wales* by John Britton and Edward Wedlake Brayley, published by Vernor and Hood, London, 1801. Engraved by B.Comte from a painting by B. West Esq PRA.

Additional Image:



[enlarge](#) [\[+\]](#)

The print on the other side is of a country house by a crossroads.

Shape Type

Breakfast & Tea Wares

Pattern Type

Landscapes and Waterscapes

Date

1812-1815

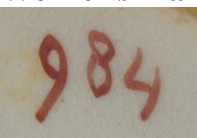
Dimensions

- Height: 23.50 in (59.69 cm)

Maker

New Hall

Worker's Mark:



Painted

[enlarge](#) [\[+\]](#)

Description:

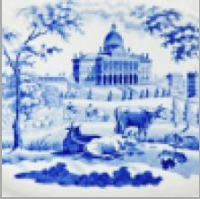
A bone china urn-shape coffee pot bat-printed with a view of Windsor Castle in pale mauve and color-washed. This print usually titled as such at the base of the engraving, the source of which is *The Beauties of England and Wales* by Britton and Brayley. There are two smaller landscape prints on the cover.

[BACK TO CATALOG INDEX](#)



Printing on Porcelain 1800-1900

[View All](#)



Landscapes and Waterscapes

[View All](#)



Examples by Maker

[View All](#)



Printed & Painted

[View All](#)



Print Type Indexd

[View All](#)