

[View PDF](#)

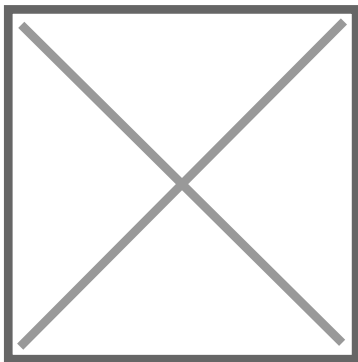
Underglaze

Printing in a single color on earthenware and stoneware 1850-1900, printed and painted

[Add to My Gallery](#) | [Create an Album](#)

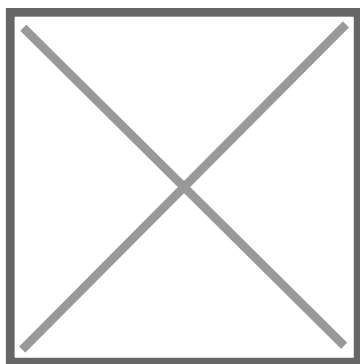


Additional Image:



[enlarge](#) [\[+\]](#)

The opposite side features a sporting scene with hounds at the hunt with a fleeing rabbit. A castle sits in the landscape with cows grazing near a water pond.



[enlarge](#) [\[+\]](#)

A view of the stand which repeats the main pattern.

Shape Type

Miscellaneous

Pattern Type

Landscapes and Waterscapes

Date

1883-1890

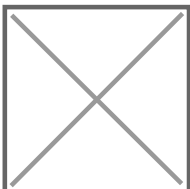
Dimensions

- Height: 10.50 in (26.67 cm)
- Width: 8.50 in (21.59 cm)

Maker

William Alsager Adderley

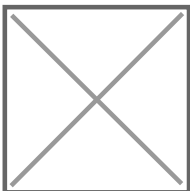
Maker's Mark:



Printed

[enlarge](#) [\[+\]](#)

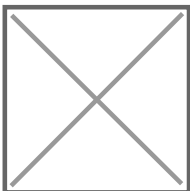
Maker's Mark:



Impressed

[enlarge](#) [\[+\]](#)

Worker's Mark:



Painted

[enlarge](#) [\[+\]](#)

Description:

A large octagonal earthenware cheese dome printed in dark brown with underglaze painting in shades of pink, red, green, cobalt blue, golden yellow, turquoise. The edges of the dome and stand are painted in a dark green with touches of gold. The pattern on the base as well as on the dome features William Shakespeare's house and a larger cartouche with an image of

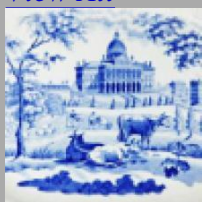
[expand](#) [\[+\]](#)

[BACK TO CATALOG INDEX](#)



Printing in a single color on earthenware and stoneware 1850-1900

[View All](#)



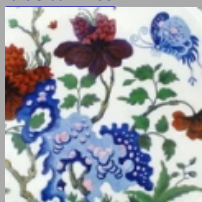
Landscapes and Waterscapes

[View All](#)



Examples by Maker

[View All](#)



Printed & Painted

[View All](#)



Print Type Indexd

[View All](#)