

[View PDF](#)

Overglaze

Printing on Porcelain 1800-1900, printed and painted

[Add to My Gallery](#) | [Create an Album](#)



**Additional Image:**



[enlarge](#) [+]

Matching teapot stand having combed base and painted pattern number in red enamel.



[enlarge](#) [+]

Another new oval teapot, cover and stand in pattern number 2569 bat printed in black using the same print number P136 without any overpainted decoration.

Shape Type

Breakfast & Tea Wares

Pattern Type

Plants

Date

1815 - 1820

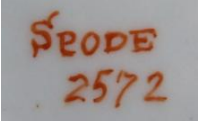
Dimensions

- Height: 6.00 in (15.24 cm)
- Length: 10.00 in (25.40 cm)
- Width: 5.00 in (12.70 cm)

Maker

Spode

**Maker's Mark:**



Painted

[enlarge](#) [+]

**Worker's Mark:**



Painted

[enlarge](#) [+]

**Description:**

A new oval teapot, cover and stand in pattern number 2572, bat printed in black with print number P136 from the Flowers and Fruit Series applied in joined sections and over painted in 4 colors: green, red, pink and yellow. Additional gilded decoration overglaze. Print reference Drakard, David and Holdway, Paul. Spode Transfer Printed Ware, 1784-1833. Woodbridge, Suffolk Antique Collector's Club, Inc., 2002.

[BACK TO CATALOG INDEX](#)



Printing on Porcelain 1800-1900

[View All](#)



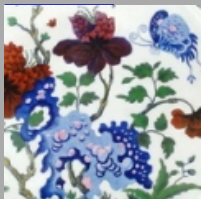
Plants

[View All](#)



Examples by Maker

[View All](#)



Printed & Painted

[View All](#)



Print Type Indexd

[View All](#)