

[View PDF](#)

Overglaze

Printing on Porcelain 1800-1900

[Add to My Gallery](#) | [Create an Album](#)



**Additional Image:**



[enlarge](#) [+]

Photograph showing the unrecorded bat print under the pouring lip.

Shape Type

## Breakfast & Tea Wares

Pattern Type

Plants

Date

1833 - 1847

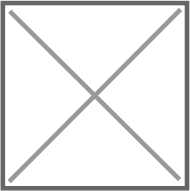
Dimensions

- Diameter: 4.50 in (11.43 cm)
- Height: 7.00 in (17.78 cm)

Maker

Copeland & Garrett

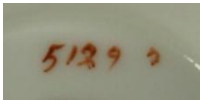
### Maker's Mark:



Printed

[enlarge](#) [+]

### Maker's Mark:



Painted

[enlarge](#) [+]

### Description:

Porcelain creamer, pattern number 5129. Decorated with a small floral bat printed overglaze in charcoal grey on a cream coloured central band and with additional gilding. The print is recorded as P147 from the factory's Flowers and Fruit series. Beneath the poring lip is an unrecorded bat print. Marked on the base with Copeland & Garrett Felspar Porcelain Late Spode printed in brown and pattern number *expand* [+]

[BACK TO CATALOG INDEX](#)



Printing on Porcelain 1800-1900

[View All](#)



Plants

[View All](#)



Examples by Maker

[View All](#)



Print Type Indexd

[View All](#)