

[View PDF](#)

Underglaze

Printing on porcelain 1800-1900, printed and painted

[Add to My Gallery](#) | [Create an Album](#)



**Additional Image:**



[enlarge](#) [\[+\]](#)

Matching Pembroke shape sugar box and cover marked with hand painted 4349 and printed Spode felspar mark. Height to knob 6.25 inches and diameter 6 inches, handle to handle.

Shape Type  
Breakfast & Tea Wares  
Pattern Type  
Plants  
Date  
1825 - 1830  
Dimensions

- Diameter: 8.75 in (22.23 cm)

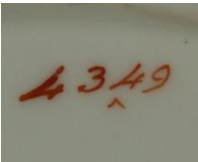
Maker  
Spode

**Maker's Mark:**



Printed  
[enlarge](#) [\[+\]](#)

**Maker's Mark:**



Painted  
[enlarge](#) [\[+\]](#)

**Worker's Mark:**



Painted  
[enlarge](#) [\[+\]](#)

**Description:**

A porcelain plate in pattern number 4349, underglaze printed in iron red and over glaze painted in shades of iron red enamel with additional gilding. Gilded inner band around rim. Back stamped with printed Spode Felspar Porcelain mark, hand-painted pattern number and workman's mark. Also having impressed felspar mark number 17, reference Spode & Copeland Marks and Other Relevant Intelligence by Robert Copeland (Second [expand](#) [\[+\]](#))

[BACK TO CATALOG INDEX](#)



Printing on porcelain 1800-1900

[View All](#)



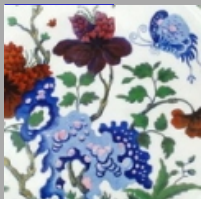
Plants

[View All](#)



Examples by Maker

[View All](#)



Printed & Painted

[View All](#)



Print Type Indexd

[View All](#)