

[View PDF](#)

Underglaze

Printing in a single color on earthenware and stoneware 1780-1820, printed and painted

[Add to My Gallery](#) | [Create an Album](#)



**Pattern**



[enlarge](#) [+]

## Source



[enlarge](#) [+]

## Source Description:

Shown here is an octagonal Chinese export porcelain plate. The design like the one on this plate would have served as an inspiration for the pattern printed on the Spode earthenware plate above.

Shape Type

Dinner & Dessert Wares

Pattern Type

Chinese, Asian and Other Exotic Themes

Date

1790-1800

Dimensions

- Length: 7.25 in (18.42 cm)
- Width: 7.25 in (18.42 cm)

Maker

Spode

## Maker's Mark:



Printed

[enlarge](#) [+]

## Worker's Mark:



Painted

[enlarge](#) [+]

**Description:**

A molded pearlware dessert dish printed in blue underglaze in the Buffalo pattern with brown enameling on the rim. Line engraved. This pattern is also referred to as Boy on a Buffalo. Marked with a painted Spode workman's mark WMP5. Reference Copeland, Robert. Spode & Copeland Marks and Other Relevant Intelligence. This pattern was one of the earliest to be transfer-printed on earthenware and

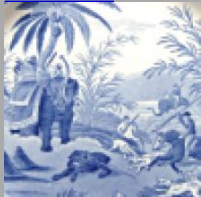
[expand](#) [+]

[BACK TO CATALOG INDEX](#)



Printing in a single color on earthenware and stoneware 1780-1820

[View All](#)



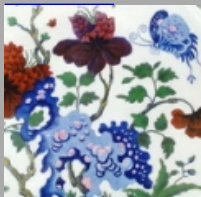
Chinese, Asian and Other Exotic Themes

[View All](#)



Examples by Maker

[View All](#)



Printed & Painted

[View All](#)



Print Type Indexd

[View All](#)