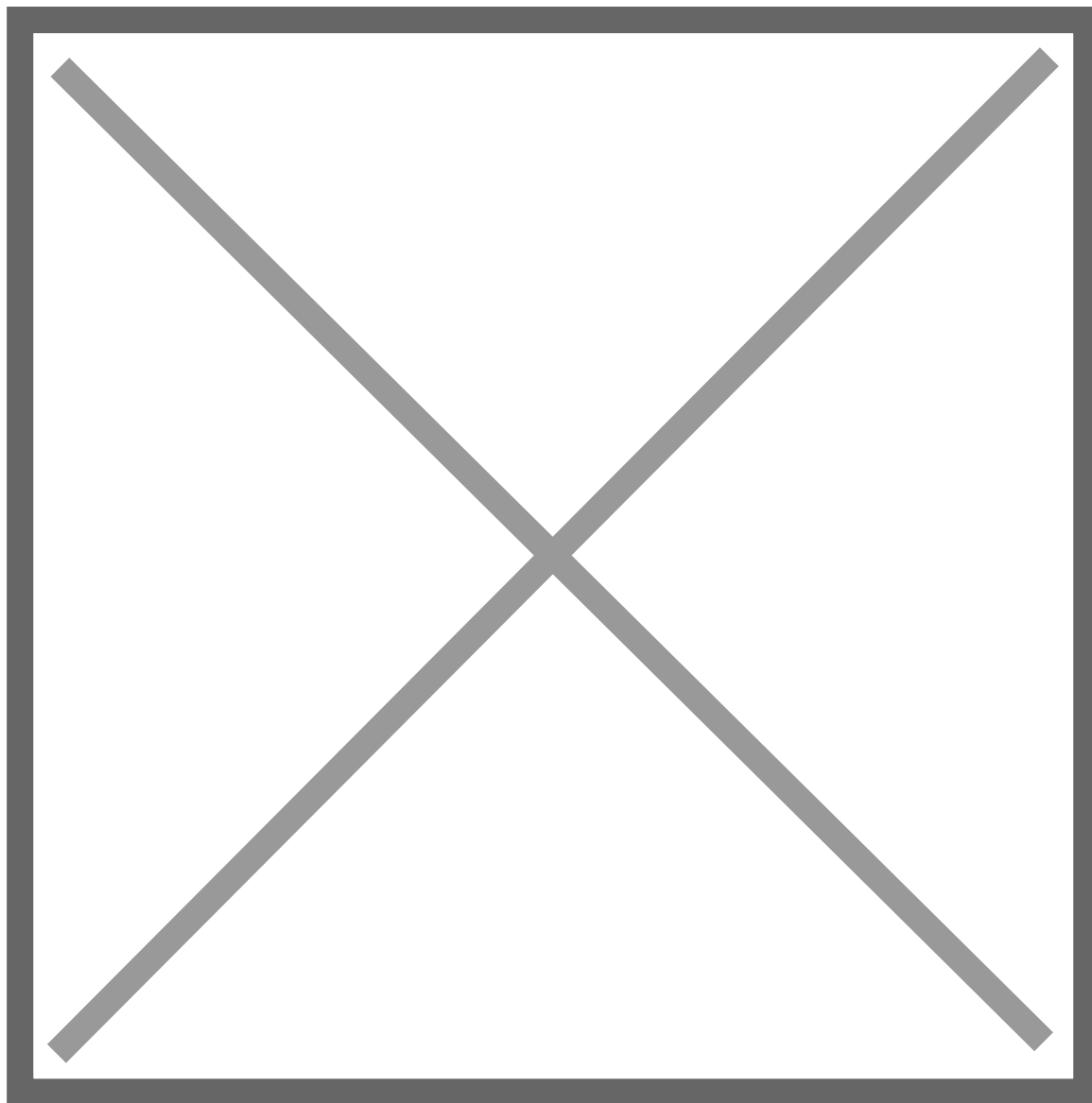


[View PDF](#)

Overglaze

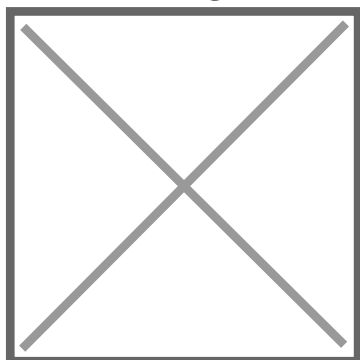
Printing on Porcelain 1800-1900, printed and painted

[Add to My Gallery](#) | [Create an Album](#)



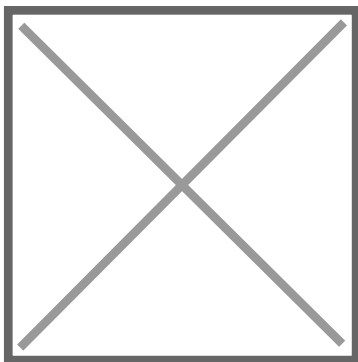
collection of Potteries Museum & Art Gallery, Stoke-on-Trent

Additional Image:



[enlarge](#) [\[+\]](#)

Reverse side.



[enlarge](#) [\[+\]](#)

Central design of large vase of flowers.

Shape Type

Breakfast & Tea Wares

Pattern Type

Chinese, Asian and Other Exotic Themes

Date

1822-1824

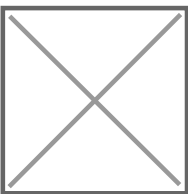
Dimensions

- Height: 2.25 in (5.72 cm)

Maker

Shelley & Shaw

Maker's Mark:



Printed

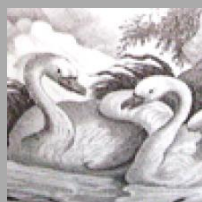
[enlarge](#) [\[+\]](#)

Description:

Bone china teacup with a black printed pattern depicting Chinese-style figures in a garden landscape. On one side a woman with a parasol stands with a child, on the other side a seated woman plays a stringed instrument, between the two prints is an over sized urn with a large floral arrangement. The whole is coarsely painted in blue, green, red and yellow enamels.

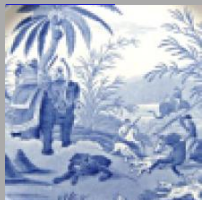
[expand](#) [\[+\]](#)

[BACK TO CATALOG INDEX](#)



Printing on Porcelain 1800-1900

[*View All*](#)



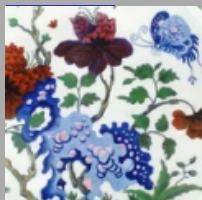
Chinese, Asian and Other Exotic Themes

[*View All*](#)



Examples by Maker

[*View All*](#)



Printed & Painted

[*View All*](#)



Print Type Indexd

[*View All*](#)