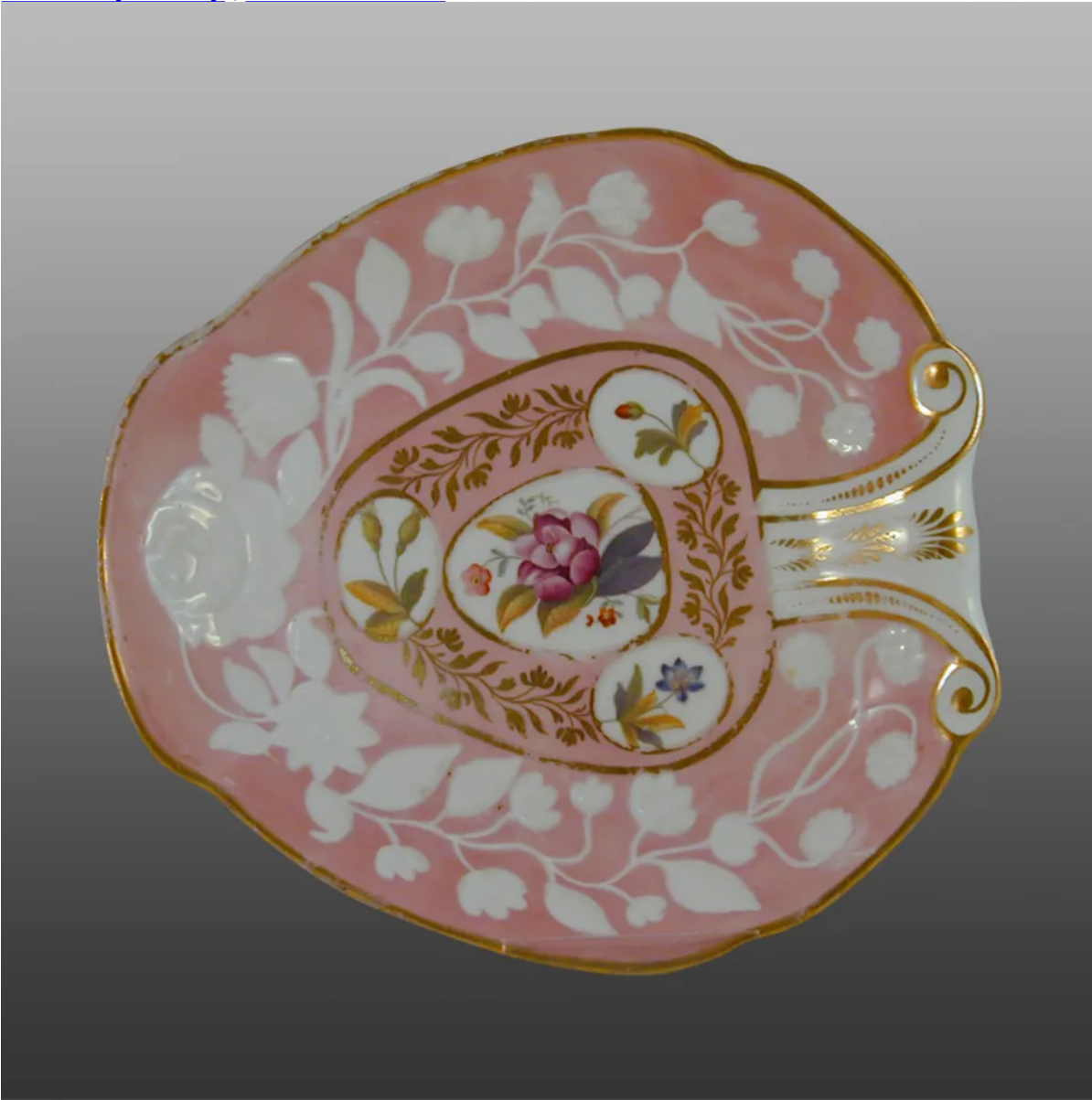


[View PDF](#)

Overglaze

Printing on Porcelain 1800-1900, printed and painted

[Add to My Gallery](#) | [Create an Album](#)



**Additional Image:**



[enlarge](#) [+]

Detail of the centre decoration.

Shape Type

Dinner & Dessert Wares

Pattern Type

Plants

Date

1812-1820

Dimensions

- Length: 20.00 in (50.80 cm)
- Width: 18.50 in (46.99 cm)

Maker

New Hall

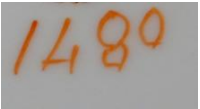
**Maker's Mark:**



Printed

[enlarge](#) [+]

**Worker's Mark:**



Painted

[enlarge](#) [+]

**Description:**

A bone china shaped dessert dish with a border moulded with a stem of white roses and florets out of a pink ground, the white reserves in the centre bat-printed and coloured with sprays of flowers, and a gold rim and leafy embellishment around the reserves.

[BACK TO CATALOG INDEX](#)



Printing on Porcelain 1800-1900

[View All](#)



Plants

[View All](#)



Examples by Maker

[View All](#)



Printed & Painted

[View All](#)



Print Type Indexd

[View All](#)