

[View PDF](#)

Underglaze

Printing in a single color on earthenware and stoneware 1780-1820, printed and painted

[Add to My Gallery](#) | [Create an Album](#)



Collection of Potteries Museum & Art Gallery, Stoke-on-Trent

**Pattern**



[enlarge](#) [+]

## Source



[enlarge](#) [+]

## Source Description:

Title: Mausoleum of Sultan Purveiz, near Allahabad  
Artist: Daniell, Thomas and William  
Engraver/Plate Maker: Daniell, Thomas and William  
Size: 23.5 inches by 17 inches (approximate)  
Print Date: 1795  
The procession in the foreground is from Eastern Gate of the Jummah Musjid at Delhi, part I, #1. The tree on the right (reversed) is from The Sacred Tree  
[expand](#) [+]

## Additional Source Image:

Title: South East View of Trichinopoly  
Artist: Daniell, Thomas and William  
Engraver/Plate Maker: : Daniell, Thomas and William  
Size: 23.5 inches by 16.5 inches  
Print Date: 1797

Shape Type

Dinner & Dessert Wares

Pattern Type

Chinese, Asian and Other Exotic Themes

Date

1815-1822

Dimensions

- Diameter: 9.75 in (24.77 cm)

Maker

William Walsh

## Description:

A slightly indented plate printed in black and painted in a pattern named Mausoleum of Sultan Purveiz based on the primary source print that inspired the pattern. The pattern was formerly attributed to Herculaneum, but that attribution has recently been discounted due to the discovery of a marked piece by William Wash. In addition to the two source prints shown below, the pattern includes elements  
[expand](#) [+]

[BACK TO CATALOG INDEX](#)



Printing in a single color on earthenware and stoneware 1780-1820

[View All](#)



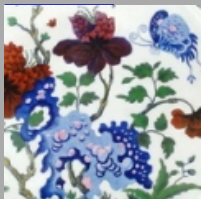
Chinese, Asian and Other Exotic Themes

[View All](#)



Examples by Maker

[View All](#)



Printed & Painted

[View All](#)



Print Type Indexd

[View All](#)