

[View PDF](#)

Underglaze

Printing in a single color on earthenware and stoneware 1820-1850, printed and painted

[Add to My Gallery](#) | [Create an Album](#)



**Additional Image:**



[enlarge](#) [\[+\]](#)

View showing the presumed initials of the owner and the date 1826.

Shape Type

Miscellaneous

Pattern Type

Chinese, Asian and Other Exotic Themes

Date

1826

Dimensions

- Height: 7.25 in (18.42 cm)

Maker

Unknown

### **Description:**

A dated earthenware jug with initials in a Chinoiserie pattern showing a full-size person in an open carriage being pulled by two small people. The transfer printing is underglaze, but overglaze enameling completes the pattern. It is rare to see a dated item in this genre, since most of the production was for the lower end of the market.

[BACK TO CATALOG INDEX](#)



Printing in a single color on earthenware and stoneware 1820-1850

[View All](#)



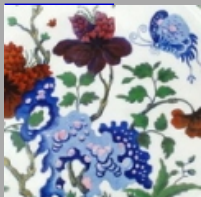
Chinese, Asian and Other Exotic Themes

[View All](#)



Examples by Maker

[View All](#)



Printed & Painted

[View All](#)



Print Type Indexd

[View All](#)