

[View PDF](#)

Underglaze

Printing in a single color on earthenware and stoneware 1820-1850

[Add to My Gallery](#) | [Create an Album](#)



Shape Type

Dinner & Dessert Wares

Pattern Type

Landscapes and Waterscapes

Date

1820-1846

Dimensions

- Height: 2.75 in (6.99 cm)
- Length: 8.00 in (20.32 cm)
- Width: 4.25 in (10.80 cm)

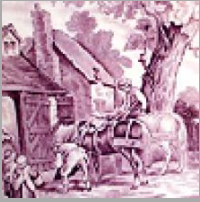
Maker

Enoch Wood & Sons

## Description:

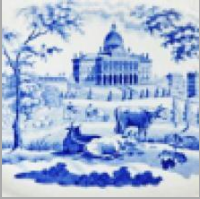
An earthenware handled sauce tureen printed in blue with a side view known as Seaton Lodge, Northumberland. This scene was also printed on a 9 inch square dish, 9.5 inch square dish, a 9.75 inch square covered dish, and an 11.75 inch pie dish.

[BACK TO CATALOG INDEX](#)



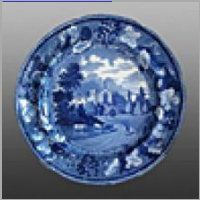
Printing in a single color on earthenware and stoneware 1820-1850

[View All](#)



Landscapes and Waterscapes

[View All](#)



Grapevine Border - Enoch Wood & Sons

[View All](#)



Examples by Maker

[View All](#)



Print Type Indexd

[View All](#)