

[View PDF](#)

Underglaze

Printing in a single color on earthenware and stoneware 1820-1850

[Add to My Gallery](#) | [Create an Album](#)



**Pattern**



[enlarge](#) [+]

## Source

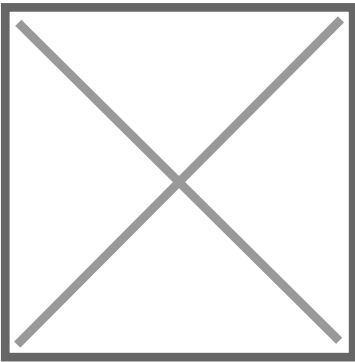


[enlarge](#) [\[+\]](#)

## Source Description:

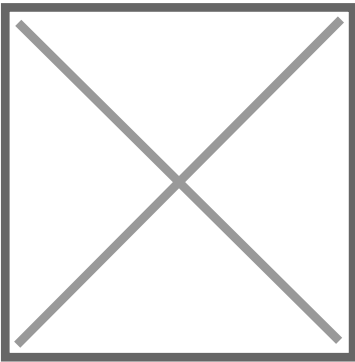
Hylands, Essex, from John Preston Neale's *Views of the Seats of Noblemen and Gentlemen in England and Wales, Scotland and Ireland*.

## Additional Image:



[enlarge](#) [\[+\]](#)

Views of two sides are shown here; on the top image is Brecknock Castle, and on the bottom is Dover Castle Kent.



[enlarge](#) [\[+\]](#)

Views of two sides are shown here; on the top image the view is Rivenhall Place, Essex, and on the bottom, Seaton Lodge, Northumberland.

Shape Type

Dinner & Dessert Wares

Pattern Type

Landscapes and Waterscapes

Date

1820-1846

## Dimensions

- Diameter: 11.75 in (29.85 cm)
- Height: 3.00 in (7.62 cm)

## Maker

Enoch Wood & Sons

## Description:

An earthenware bowl with beaded edge printed in blue with the named view Hylands, Essex. This scene was also printed on a 10.75 inch footed compote. The source print for this pattern is from John Preston Neale's Views of the Seats of Noblemen and Gentlemen in England and Wales, Scotland and Ireland (shown below). Four additional views were printed on the sides of the *expand* [+]

## BACK TO CATALOG INDEX



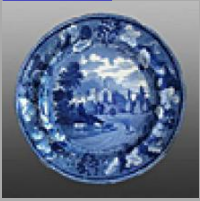
Printing in a single color on earthenware and stoneware 1820-1850

[View All](#)



Landscapes and Waterscapes

[View All](#)



Grapevine Border - Enoch Wood & Sons

[View All](#)



Examples by Maker

[View All](#)



Print Type Indexd

[View All](#)