

[View PDF](#)

Underglaze

Printing on porcelain 1750-1800

[Add to My Gallery](#) | [Create an Album](#)

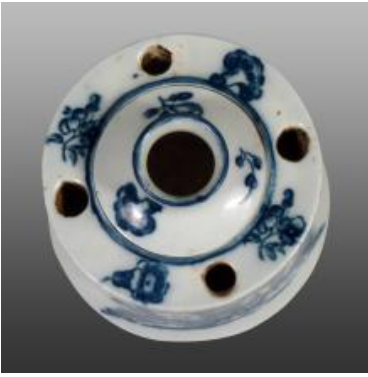


Additional Image:



[enlarge](#) [+]

The reverse pattern.



[enlarge](#) [+]

The top of the inkpot, decorated with small floral prints.

Shape Type

Miscellaneous

Pattern Type

Chinese, Asian and Other Exotic Themes

Date

1776-1785

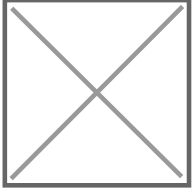
Dimensions

- Diameter: 3.75 in (9.53 cm)

Maker

Caughley

Maker's Mark:



Printed

[enlarge](#) [+]

Description:

This rare inkwell has a removable central inkpot and the main body has four holes for pens. It is printed with an early Caughley pattern, the Bell Toy. A mug dated 1776, in the V&A Museum, is decorated with this print on either side. The reverse pattern used on this inkwell, showing a vase shaped object with a planted pot to either side, is also found with the

[expand](#) [+]

[BACK TO CATALOG INDEX](#)



Printing on porcelain 1750-1800

[View All](#)



Chinese, Asian and Other Exotic Themes

[View All](#)



Examples by Maker

[View All](#)



Print Type Indexd

[View All](#)