

[View PDF](#)

Overglaze

Printing on Porcelain 1800-1900

[Add to My Gallery](#) | [Create an Album](#)



Additional Image:



[enlarge \[+\]](#)

Centrepiece in profile



[enlarge \[+\]](#)

Detail of one of the bat prints.

Shape Type

Dinner & Dessert Wares

Pattern Type

Animals

Date

1822 - 1831

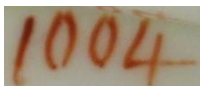
Dimensions

- Height: 4.50 in (11.43 cm)
- Length: 12.50 in (31.75 cm)
- Width: 9.00 in (22.86 cm)

Maker

Samuel Alcock & Co.

Maker's Mark:



Painted

[enlarge \[+\]](#)

Description:

A centrepiece handled tray in Alcock's pattern number 1004, having embossed Melting Snow borders, but printed in charcoal grey with farm animals and having additional gilding.

[BACK TO CATALOG INDEX](#)



Printing on Porcelain 1800-1900

[View All](#)



Animals

[View All](#)



Examples by Maker

[View All](#)



Print Type Indexd

[View All](#)