

[View PDF](#)

Underglaze

Printing in a single color on earthenware and stoneware 1820-1850

[Add to My Gallery](#) | [Create an Album](#)



**Pattern**



[enlarge](#) [+]

## Source

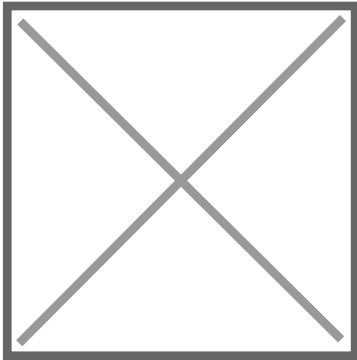


[enlarge](#) [+]

## Source Description:

After a sketch by W. Page and engraved by E. Finden, 1833. This image is from Finden's Landscape and Portrait Illustrations to the Life and Works of Lord Byron. The Franciscan convent was Lord Byron's (1788-1824) place of residence while he was in Athens, during his first trip abroad. From the convent

## Additional Image:



[enlarge](#) [+]

Detail of central pattern.

Shape Type

Dinner & Dessert Wares

Pattern Type

Landscapes and Waterscapes

Date

1833-1847

Dimensions

- Diameter: 13.50 in (34.29 cm)

Maker

Copeland & Garrett

## Maker's Mark:



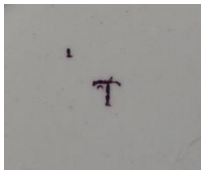
Printed  
[enlarge \[+\]](#)

**Maker's Mark:**



Impressed  
[enlarge \[+\]](#)

**Worker's Mark:**



Painted  
[enlarge \[+\]](#)

**Description:**

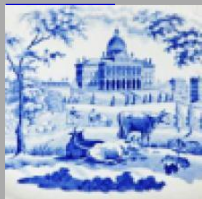
A large earthenware soup tureen stand printed in purple with a scene from the Byron Views Series, inspired by the source print Franciscan Convent, Athens shown below.

[BACK TO CATALOG INDEX](#)



Printing in a single color on earthenware and stoneware 1820-1850

[View All](#)



Landscapes and Waterscapes

[View All](#)



Examples by Maker

[View All](#)



Print Type Indexd

[View All](#)