

[View PDF](#)

Overglaze

Printing on Porcelain 1800-1900, printed and painted

[Add to My Gallery](#) | [Create an Album](#)



Shape Type

Breakfast & Tea Wares

Pattern Type

Chinese, Asian and Other Exotic Themes

Date

1825-1830

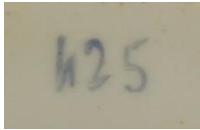
Dimensions

- Height: 8.00 in (20.32 cm)
- Length: 16.50 in (41.91 cm)

Maker

New Hall

**Worker's Mark:**



Painted

[enlarge \[+\]](#)

**Description:**

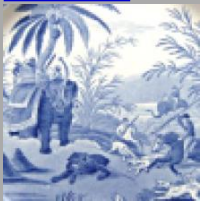
A bone china cream jug with the handle molded as a dolphin, outline-printed in black and color-washed with a Chinese scene of figures in a garden and a boy looking out of a window, pattern 425. This was a very popular pattern and was used from its inception around 1805 through to about 1830, commonly referred to as The Boy in the Window.

[BACK TO CATALOG INDEX](#)



Printing on Porcelain 1800-1900

[View All](#)



Chinese, Asian and Other Exotic Themes

[View All](#)



Examples by Maker

[View All](#)



Printed & Painted

[View All](#)



Print Type Indexd

[View All](#)