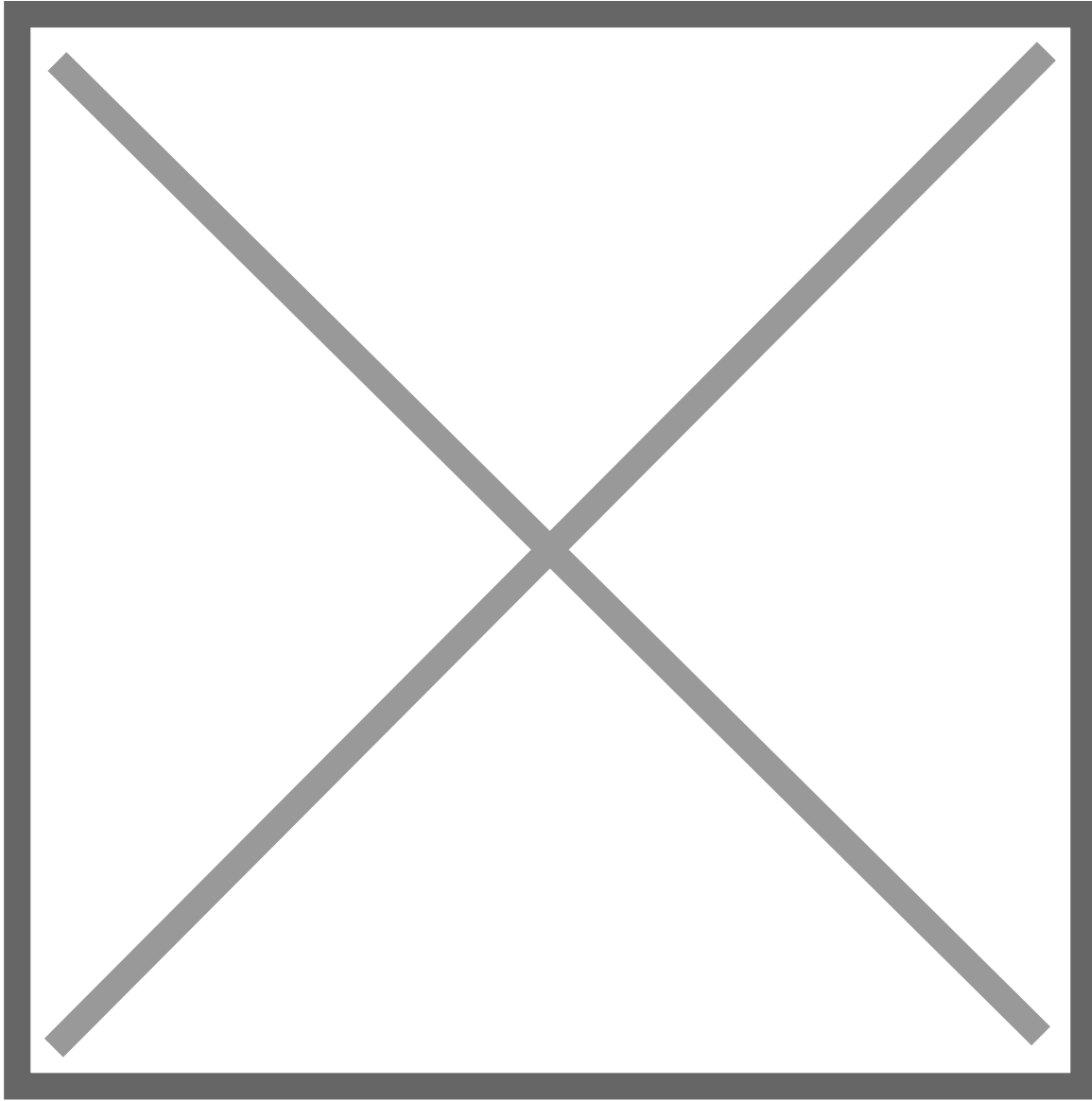


[View PDF](#)

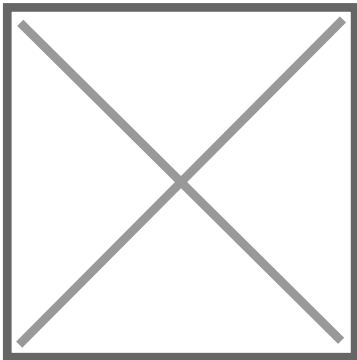
Underglaze

Printing in a single color on earthenware and stoneware 1820-1850

[Add to My Gallery](#) | [Create an Album](#)



Pattern



[enlarge](#) [+]

Source



[enlarge](#) [+]

Source Description:

The Rookery, Surrey, from John Preston Neale's Views of the Seats of Noblemen and Gentlemen in England and Wales, Scotland and Ireland.

Shape Type

Dinner & Dessert Wares

Pattern Type

Landscapes and Waterscapes

Date

1820-1846

Dimensions

- Diameter: 7.75 in (19.69 cm)

Maker

Enoch Wood & Sons

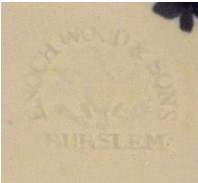
Maker's Mark:



Printed

[enlarge](#) [+]

Maker's Mark:



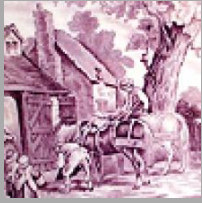
Impressed

[enlarge](#) [+]

Description:

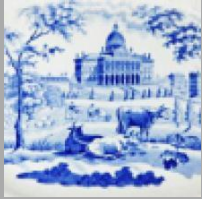
An earthenware plate printed in blue with the named view The Rookery, Surrey. This scene was also printed on a 6.5 soup. Printed title mark and impressed maker's mark. The source print for this pattern is from John Preston Neale's Views of the Seats of Noblemen and Gentlemen in England and Wales, Scotland and Ireland (shown below).

BACK TO CATALOG INDEX



Printing in a single color on earthenware and stoneware 1820-1850

[View All](#)



Landscapes and Waterscapes

[View All](#)



Grapevine Border - Enoch Wood & Sons

[View All](#)



Examples by Maker

[View All](#)



Print Type Indexd

[View All](#)