

[View PDF](#)

[Underglaze](#)

Printing in a single color on earthenware and stoneware 1820-1850

[Add to My Gallery](#) | [Create an Album](#)



Additional Image:



[enlarge](#) [+]

Pattern close-up.

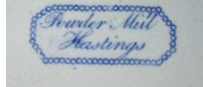
Shape Type

Dinner & Dessert Wares
Pattern Type
Landscapes and Waterscapes
Date
1820-1829
Dimensions

- Diameter: 10.00 in (25.40 cm)

Maker
G.M & C.J. Mason

Make a Mark:



[enlarge \[+\]](#)

Description:

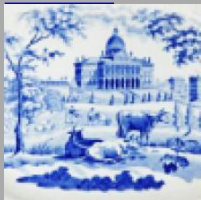
An earthenware soup dish with a view of Powder Mill, Hastings. The mill was used to make gunpowder and was located near to the site of the Battle of Hastings (1066). This is one of 16 patterns in Mason's Beaded Frame Mark Series, many of which bear the title of the pattern in a beaded frame, hence the series name.

[BACK TO CATALOG INDEX](#)



Printing in a single color on earthenware and stoneware 1820-1850

[View All](#)



Landscapes and Waterscapes

[View All](#)



Examples by Maker

[View All](#)



Print Type Indexd

[View All](#)